

Strategic Vision

2026-2030

Protecting Wildlife, Preserving Tomorrow



**WA
WILDLIFE**

Vision & Purpose

OUR VISION

Protecting wildlife,
preserving tomorrow

OUR PURPOSE

To drive positive change for
wildlife and their habitats
through action, science
and advocacy

ACKNOWLEDGEMENT OF COUNTRY

WA Wildlife acknowledges the Noongar people of Beeliar Boodjar. We acknowledge a continuing connection to land, waters and culture and pay our respects to the Elders, past, present and emerging.

From Problem to Purpose – Why We Act

Our natural world is under growing pressure – in Western Australia and across the globe. Wildlife is significantly affected as landscapes fragment, the climate warms, invasive species spread and human activity reaches further into nature. These forces are significantly affecting how animals live, move and survive.

At WA Wildlife, we respond to these challenges every day. Thousands of animals arrive at our Hospital each year needing urgent care, and we are here 365 days a year to provide lifesaving treatment and rehabilitation. While this work saves individual lives, our ultimate goal is prevention – creating safer habitats, reducing risks and building long-term species resilience.

That's why our work goes beyond the Hospital: delivering practical education that helps communities coexist with wildlife, working with land managers and councils on habitat protection, driving research and data to guide better decisions and coordinating responses to extreme weather and emerging diseases.

With our partners, supporters and volunteers, we are shifting from rescue to resilience – protecting wildlife and preserving tomorrow. Together, we can create healthy, connected landscapes where native species thrive and far fewer animals need our care.

Action, Science & Advocacy

A difference where it matters

At WA Wildlife, conservation is a collective effort. By embracing the spirit of community, we're protecting Australia's native species and helping to create a more sustainable tomorrow.

Through action, science and advocacy we can make a difference.

We take **action** through wildlife rescue, emergency response, veterinary medicine, rehabilitation and professional training.

Our research, conservation programs, disease surveillance, collaboration with research institutes, and publications demonstrate our dedication to **science**.

Through education, eco-tourism, media outreach, government engagement and partnerships, we drive **advocacy** that shapes awareness and influences wildlife-friendly policy.

Plastic pollution claimed the life of this green sea turtle, whose intestines were packed with the plastic seen in this picture.



About Us



WA Wildlife was established in 1998 and is a not-for-profit organisation, located in Perth Western Australia. We were the first wildlife rehabilitation facility in Western Australia licensed with the Veterinary Practice Board WA.

We protect wildlife and preserve tomorrow through our nationally recognised programs in veterinary medicine, rehabilitation, emergency response, education, eco-tourism and research.

We are Australia's busiest rescue-to-release wildlife organisation, home to one of the most active native animal veterinary hospitals in the country. With complete oversight of every stage of care, our approach is unique in Australia.

Every injured or sick animal that comes into our hands receives veterinary care, giving each life the chance to heal and return to the wild. Beyond rescue and rehabilitation, our work extends to research, education and conservation. By valuing each life we safeguard ecosystems and help shape a future where people and wildlife thrive together.

Through all this we are protecting wildlife and preserving tomorrow.



ACTION

- Wildlife medicine
- Wildlife rescue
- Emergency response
- Wildlife rehabilitation
- Wildcare Helpline
- Professional training

SCIENCE

- Research
- Conservation programs
- Sentinel Clinic
- Disease surveillance
- Wildlife monitoring
- Publications

ADVOCACY

- Education
- Eco-tourism
- Media outreach
- Government engagement
- Partnerships

Vision



WA Wildlife protects wildlife and preserves tomorrow through our nationally recognised programs in veterinary medicine, rehabilitation, emergency response, education, eco-tourism and research.

Strategic Priorities

Protecting Wildlife

EDUCATION & OUTREACH
Deliver education programs that inspire action and foster care, while promoting conservation tourism that builds lasting connections between people and wildlife.

SUSTAINABLE PRACTICES
Develop innovative practices that support conservation, uphold ethical responsibility, reduce environmental impact and ensure long-term financial resilience.

WILDLIFE REHABILITATION
Support species recovery through effective rehabilitation and release programs.

PROFESSIONAL TRAINING
Empower our people by investing in volunteer and staff development, in addition to training for veterinary professionals and other industries.

Preserving Tomorrow

RESEARCH & ADVOCACY
Advance wildlife protection and conservation by influencing policy, providing expert consultation and building public awareness.

EXPANDING WILDLIFE SERVICES
Innovate best practices in animal welfare and care, creating new infrastructure and resources across the state to set higher standards and ensure the best possible quality of life for wildlife.

VETERINARY MEDICINE
Deliver leading veterinary care by implementing best-practice treatments and driving innovation to establish new standards in native animal welfare.

EMERGENCY RESPONSE
Enhance wildlife protection by supporting and coordinating effective emergency response operations to ensure rapid and impactful action during emergencies.

Annually

15,000+

phone calls are answered concerning sick and injured wildlife.

6,000+

sick and injured animals admitted to the WA Wildlife Hospital.

100,000+

volunteer hours are contributed to wildlife care and operations.

5,000+

visitors attend education programs.

800+

animals are rescued via the WA Wildlife Ambulance.

250+

species are treated and rehabilitated.

365

days that we are open and operating.



The Way Forward

To enable WA Wildlife to drive positive change, we need a roadmap. This is our plan for how we'll build our future.

Our strategic framework guides our decisions and steers us toward a sustainable future.

We will:

- Maintain reputation and social licence
- Deliver sustainable solutions
- Connect people with nature
- Deliver quality wildlife care and welfare
- Invest in science and conservation
- Introduce advocacy and awareness
- Be a safe place for people
- Influence policy and legislative change

Horizon 1

2025-2026

Addressing key strategic risks

We're getting ready for the future by strengthening our marketing and fundraising, expanding tourism opportunities and securing long-term partnerships.

We're also consolidating processes, embedding strong health and safety practices and auditing resources to improve efficiency across everyday operations.

Horizon 2

2027 & 2028

Building capacity

We're getting ready for the future by strengthening our leadership, exploring new opportunities for growth and enhancing community engagement programs.

We're also building our profile, exploring major funding opportunities and sharpening our advocacy to better address the challenges wildlife face.

Horizon 3

2029 & 2030

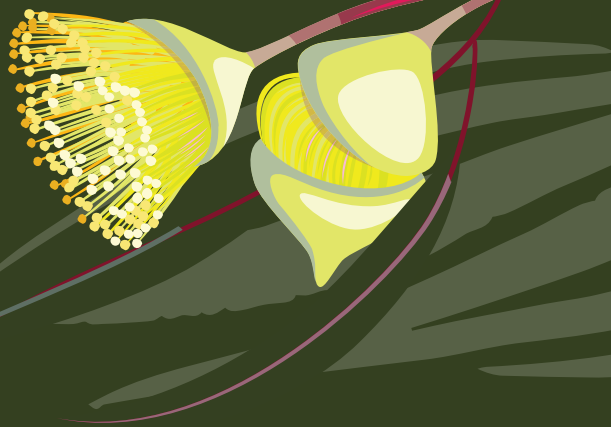
Implementing new projects

We'll turn years of preparation into action by becoming the premier wildlife hospital in Australia, expanding into new conservation programs and services, and strengthening rehabilitation initiatives.

We'll also sharpen our advocacy focus and strengthen our stewardship role to secure better outcomes for wildlife and the communities supporting them.

PHOTO: FABIEN VIVIER

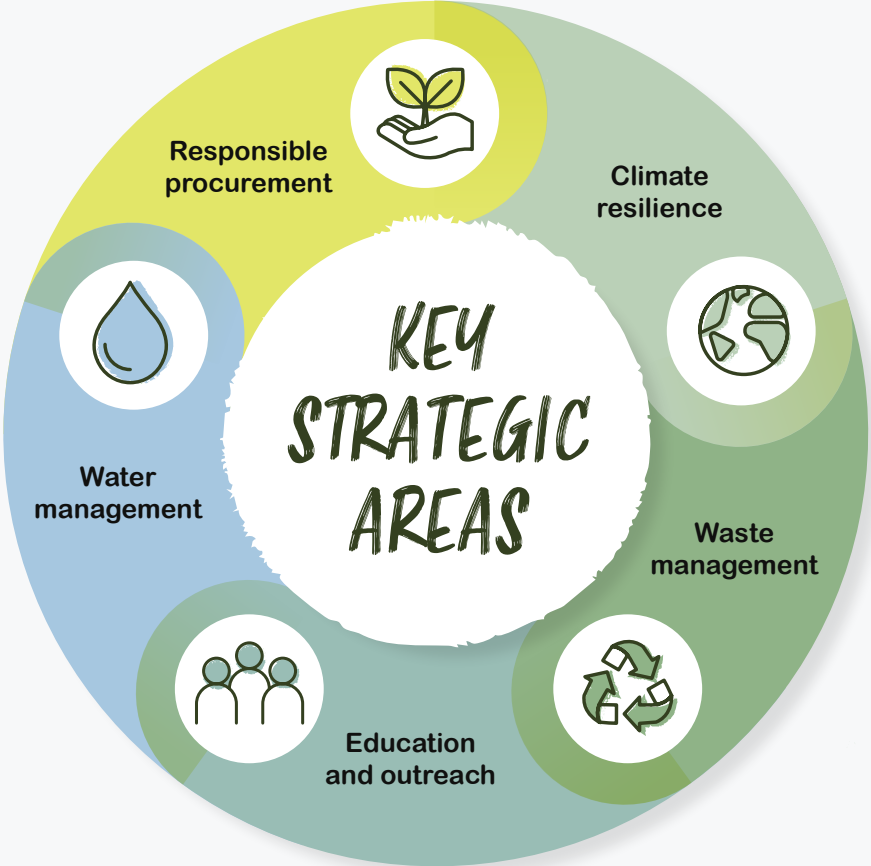
Sustainable Development Goals



In Western Australia, wildlife is significantly affected as landscapes fragment, the climate warms, invasive species spread and human activity reaches further into nature.

The UN's 2030 Sustainable Development Goals call for urgent global action and at WA Wildlife, we're proud to be part of that mission locally. Through rescue, care and conservation, we're working to protect WA's native animals and help build a more sustainable future for our community and our environment.

WA Wildlife's Sustainability Plan 2026–2030 proudly aligns with the Sustainable Development Goals to make a positive and lasting difference for our community and wildlife, including:



Responsible procurement

We are committed to purchasing and using ethical and environmentally sound supplies.



Climate resilience safeguard

Our climate resilient initiatives include drought tolerant native gardens, improved bushfire readiness and investment in natural shading of wildlife enclosures.



Waste management

We are committed to reducing waste by developing and implementing a comprehensive waste management policy to identify reduction opportunities and build on existing initiatives.



Education and outreach

Our goal is to strengthen the focus on climate change in WA Wildlife's educational workshops and increase the number of workshops delivered each year.



Water management

As part of our ongoing commitment to sustainable resource use, we will implement a water management policy and offer targeted water-saving initiatives.



The goals within this Sustainability Strategy align with several of the United Nations Sustainable Development Goals, including:



Case Studies

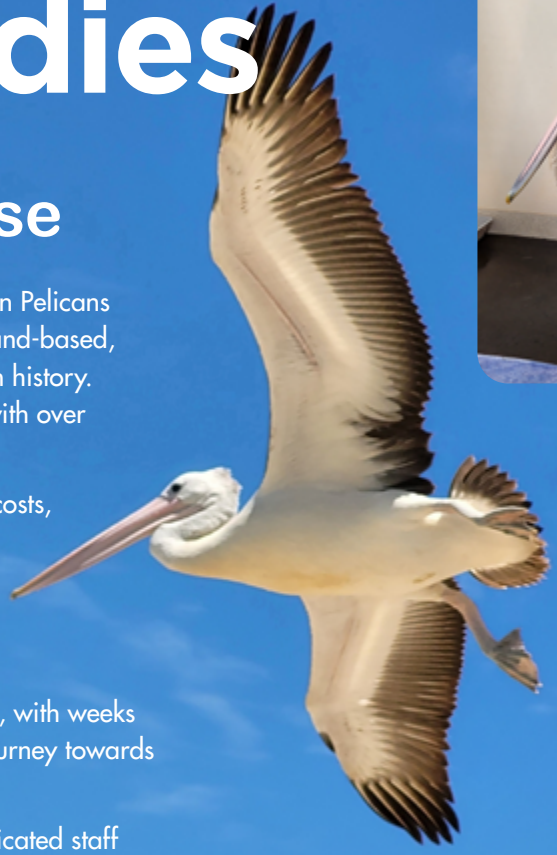
Emergency Response

In 2023, WA Wildlife treated more than 55 Australian Pelicans impacted by oil contamination. This was the largest land-based, oiled wildlife recovery response in Western Australian history. It was carried out over an intensive six week period with over 10,000 volunteer hours.

The operation incurred more than \$40,000 in direct costs, with an additional \$120,000 in in-kind support. The International Fund for Animal Welfare (IFAW) provided critical funding assistance, enabling WA Wildlife to cover essential response expenses.

This rescue required endurance, skill and compassion, with weeks of exhaustive care, while the birds underwent their journey towards recovery and release.

This monumental effort was led by WA Wildlife's dedicated staff and volunteers, each step focused on giving these birds the best chance of survival.



Volunteer Programs

Nicola began volunteering with WA Wildlife in January 2022 in our recovery wards, providing care to patients on their rehabilitation journey. Her skills and leadership quickly stood out and progressed to become a Recovery Ward Supervisor. During this time, she was overseeing a team of 10-12 volunteers each shift to ensure animals received the highest standard of care.

More recently, Nicola has taken on a key role in triage - processing new patients as they arrive at the Hospital and providing critical support to our veterinary team. On busy days, she may triage up to 40 animals during a single six-hour shift.

Reliable, committed and deeply passionate about conservation, Nicola is making a real difference for our native wildlife. Through her dedication, she is protecting wildlife and preserving tomorrow.



Veterinary Medicine

A critically injured Wedge-tailed eagle arrived at the WA Wildlife Hospital with gunshot wounds to its wing. X-rays confirmed a fractured wing and our veterinary team immediately performed complex orthopaedic surgery to repair the fracture.

For four weeks, the eagle recovered in WA Wildlife's purpose-built veterinary hospital and then our raptor flight enclosure, where it could gradually rebuild strength and mobility. Once stable, the bird was transferred to Cape Raptor Centre in Margaret River, to continue its recovery journey.

Thanks to our state-of-the-art facilities, orthopaedic surgery, intensive care and rehabilitation, the eagle eventually returned to the skies.



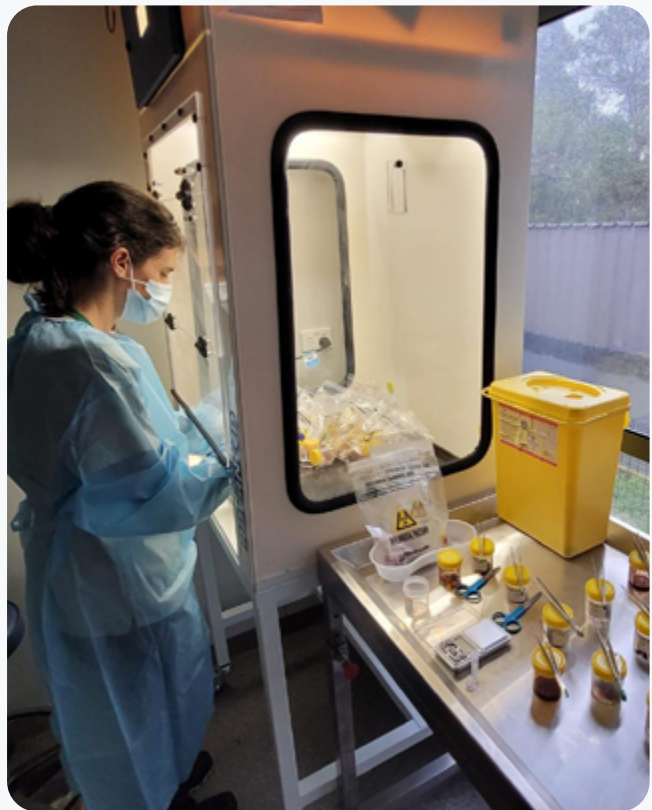
Research

In 2024, WA Wildlife became a lead responder in investigating Magpie Paralysis Syndrome, a mysterious and often fatal condition affecting magpies and similar species across Western Australia.

The program has involved hundreds of clinical assessments, laboratory submissions and data recording over many months. Thousands of volunteer and staff hours have been dedicated to monitoring cases, trialling treatment options and working with researchers to identify possible environmental and toxicological links.

This research requires vigilance, collaboration and scientific discipline, with every patient assessed not only for treatment but also as part of a broader investigation into emerging wildlife disease. As a Sentinel Clinic for Wildlife Health Australia, WA Wildlife continues to play a critical role in national wildlife surveillance and research efforts.

By contributing to this essential research, WA Wildlife is helping protect wildlife populations and strengthen Australia's early-warning system for wildlife health threats.



From humble beginnings



1998

Native ARC Incorporated begins as a small wildlife rehabilitation facility out of an old house in Bibra Lake.

2006

Native ARC relocates to an adjacent house.

2009

Native ARC came under new management, with a restructure of the entire organisation.

2016

Planning for the first Native ARC veterinary hospital commences.

2018

Native ARC is licensed with the Veterinary Surgeons' Board of Western Australia becoming the first wildlife rehabilitation facility in WA to operate as both a rehabilitation facility and veterinary hospital.

2021

The WA Wildlife Hospital and WA Wildlife Ambulance commenced operations.

2021

Native ARC Incorporated ceased trading as Native ARC and commenced trading as WA Wildlife.

2020

Native ARC opened its first Op shop in Hilton.

2019

The redevelopment of Native ARC commenced, to create a purpose built wildlife hospital, rehabilitation facility and education and training centre.

2022

WA Wildlife Hospital admitted more than 6500 animals.

2023

Official launch of the new WA Wildlife site, including the Hospital and WA Wildlife Education and Training Centre.

2023

WA Wildlife opened its doors to visitors for the first time through its eco-tourism programs and opened a second Op shop in Yangebup.

2024

Official launch of the WA Wildlife Marine Turtle Facility and Reptile Discovery Centre.

2025

Launch of our new 5-year strategic direction.

Towards 2030

Shaping a future where wildlife is highly valued and people and wildlife thrive together.



Be part of something extraordinary for wildlife.

Your support directly helps the care and protection of native wildlife in Western Australia. As a not-for-profit organisation, every donation helps cover essential costs like veterinary care, food, shelter, research and public education.

Corporate Partnerships

Partner with purpose and align your business values with meaningful wildlife conservation across WA.

- Hospital Sponsorship: Support enclosures, equipment or animal care through our sponsorship packages, ranging from Bronze to Platinum, with annual branding benefits.
- Corporate volunteering: Team building through land care, animal enrichment and exclusive hospital tours.
- Workplace giving: Start payroll donations, match staff gifts or fundraise at work.

Bequests & Gifts

Leave a legacy that protects WA's wild future.

- Include WA Wildlife in your Will through gifts, property or shares.
- Ensure long-term conservation and care.
- Join our Legacy Circle to receive recognition and impact updates.

Individual Contributions

WA Wildlife relies on community support to rescue, rehabilitate and release thousands of native animals every year.

- **Support wildlife:** Donate, fundraise or volunteer to help rescue, rehabilitate and protect injured animals.
- **Engage with us:** Visit our facilities for a tour and subscribe for updates, rescue stories and research news.
- **Advocate for change:** Join our campaigns and raise your voice for wildlife that can't speak for themselves.

Protect wildlife and preserve tomorrow.
Reach out to us at support@wawildlife.org.au to discuss how you would like to make a difference.

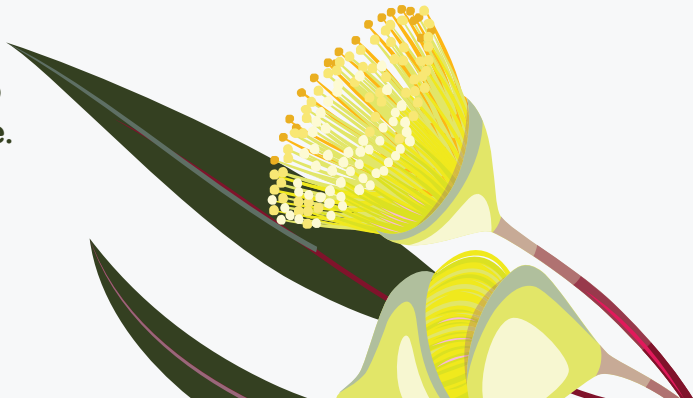


PHOTO: BRIAN DELAMONT



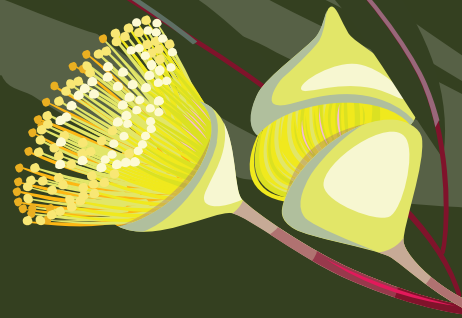
Stand with us

We are facing a biodiversity crisis with the potential to lose species found nowhere else on earth. However, we CAN change the outcome.

When wildlife thrives, people and communities do too. By protecting habitats, taking action and learning to coexist, we can build a stronger, more resilient future.

With action, science and advocacy, recovery is possible.

By standing with WA Wildlife, you can help turn rescue into resilience – protecting wildlife today and preserving tomorrow for generations to come.



Contact us:

📞 08 9417 7105

✉️ support@wawildlife.org.au

🌐 wawildlife.org.au

📍 WA Wildlife, 172 Hope Road, Bibra Lake, WA 6163

📘 WA Wildlife

📷 wa_wildlife_

🌐 wa-wildlife

WA Wildlife is a Community Partner of RAC supported through monthly volunteering by RAC people.

Proudly supported by



For the better



**WA
WILDLIFE**
Protecting Wildlife, Preserving Tomorrow